

13.0 BANNING LIBRARY DISTRICT

Library services are provided by the Banning Library District and are discussed within this MSR.

13.1 LOCATION AND GOVERNANCE

The Banning Library District was established in 1916 pursuant to Sections 19600–19734 of the Education Code. The District provides library services to residents of the City of Banning and the surrounding unincorporated areas. The District’s boundary and coterminous SOI include approximately 306 square miles. The District’s boundary extends from Highland Home Road to the west, the Whitewater and Snow Creek areas to the east, the Twin Pines and Poppet Flats areas to the south, and the County boundary to the north. The District’s location and boundary are shown in Figure 13.1. The District receives annual certified population figures from the California State Library. The estimated population within the District for the FY 2007 is 30,659.

The library district is governed by a five-member Board of Trustees who are elected to four-year terms. The Library Board meets on the first Wednesday of the month at 4:00 p.m. in the Banning Library Conference Room. Agendas are posted one week prior to the meeting at two entrances to the Banning Library. Agendas are also e-mailed or faxed to the Banning Record Gazette, the Riverside Press Enterprise, and the San Bernardino Sun.

13.2 FINANCIAL INFORMATION

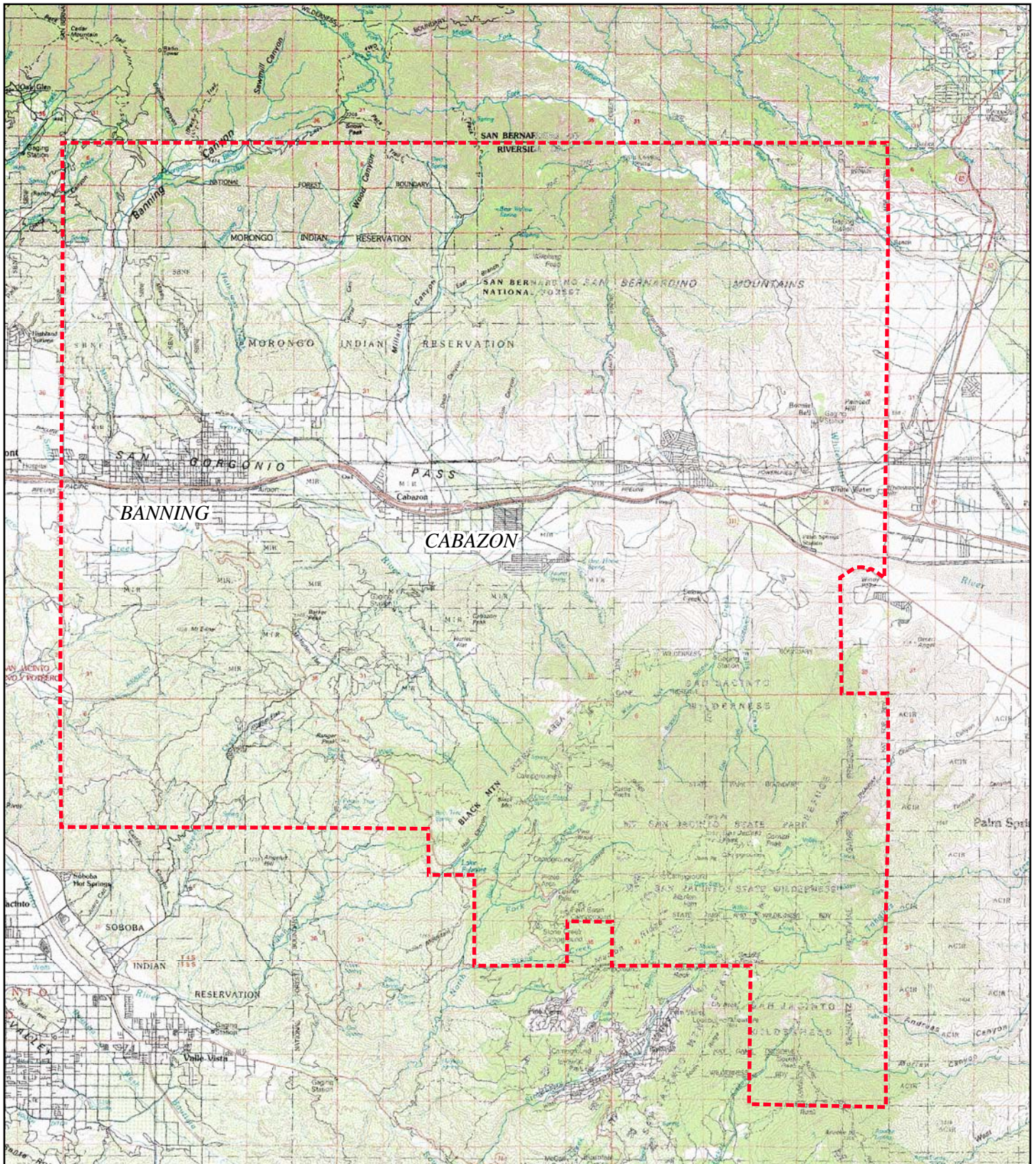
The Library District adopts an annual budget. The District’s revenue is largely from property taxes and supplemented by investment income, fees, fines, grants, and donations. As shown in Table 13.A, the District has had revenues that exceed expenses. Similarly, the budget for FY 2005–06 is expected to result in revenues that exceed expenditures. It should be noted that the District has budgeted \$100,000 for the general reserve for both FY 2006 and 2007. Based upon the District’s population estimate and the expenditures for the fiscal year ending 2006, the cost of the District to provide library services was \$14.07 per capita.

Table 13.A: Banning Library District Summary of Total Revenues and Total Expenses

	2005	2006*
Total Expenses	\$454,306	\$431,508
Total Revenues	\$586,931	\$709,273
Net Revenues (Loss)	\$132,625	\$277,765

Source: Financial Statement for the fiscal year ending 2005; fiscal year 2005–06 budget.


*Budgeted information



LSA

LEGEND

FIGURE 13.1

 Banning Unified School District Library Boundaries



Riverside LAFCO MSR
Banning Library District

SOURCE: USGS 1:100,000 Quads, Big Bear Lake & Palm Springs, Ca

I:\RLA530\G\Banning_Library_Dist.ai (9/7/06)

In addition to the required financial budgets and audits, the District is required to prepare an annual report to the State Library and State Controller. The State Library collects and charts statistics but does not collect a detailed revenue report. The State Controller requires a copy of the annual independent auditor's report. Also, monthly operational reports are required to be prepared and submitted to the Board. These reports contain circulation and collection information and monthly expenditure and revenue data.

13.3 LIBRARY SERVICES

The District provides two library facilities as detailed below.

Banning Library: located at 21 West Nicolet Street in Banning. The facility is 9,573 square feet and currently has 57,000 volumes, with an annual circulation of 125,000.

Cabazon Branch: located at 50171 Ramona Street in Cabazon. The facility is 1,300 square feet and currently has 4,000 volumes, with an annual circulation of 2,000.

The Riverside County EDA has proposed new construction to replace the Cabazon Branch in trade for the existing site, which is located next to the Riverside County Sheriff's new substation. The proposed new branch would be 5,000 square feet and located on the same site as a proposed Cabazon community park. This would be between the James A. Venable Community Center and the Cabazon Elementary School. The District's Board of Trustees has expressed a strong interest in this proposal.

The District has recently retained a library planning consultant to assess the District's existing facilities and services, identify deficiencies, recommend improvements, and create a 25-year strategic plan for future services. In addition, the District has retained a financial planning consultant to work with the library planner and prepare a residential development impact fee justification study. Work on this planning project has just begun and recommendations are not expected for some time. However, the District has stated that any objectives that include new construction will not be possible without additional funding.

Based on the California State Library Annual Statistics Study referenced by the District, in FY 2004–05 the District provided 2.24 items per capita and 0.36 square feet per capita. The District currently does not have library service standards. However, the strategic plan is expected to result in adopted standards based on State and national standards.

The District has stated that the provision of services has been impacted by growth within the District and from nonresident use (residents living outside of the District's boundary). Approximately 17 percent of the registered library users are nonresidents, which currently accounts for 14.2 percent of the District's circulation. In addition, the District is concerned that outlying areas of the District are not being served adequately. The areas of Poppet Flats, Twin Pines, Whitewater, and Snow Creek are up to 15 miles away from library facilities.