

15.0 BEAUMONT LIBRARY DISTRICT

Library services are provided by the Beaumont Library District and are discussed within this MSR.

15.1 LOCATION AND GOVERNANCE

The Beaumont Library District was established in August 1911 pursuant to Sections 19600–19734 of the Education Code. The District provides library services to residents of the City of Beaumont, parts of the City of Banning, the unincorporated Cherry Valley, and specific areas of unincorporated areas of Riverside County, as shown on Figure 15.1. The District’s boundary and coterminous SOI include approximately 60 square miles. The District has estimated that in June 2006, there were approximately 44,137 residents living within the District.

The library district is governed by a five-member Board of Directors elected to four-year terms. The Library Board meets on the third Wednesday of the month at 3:00 p.m. Agendas are posted 72 hours prior to the meeting in three locations, usually the Beaumont City Hall, Beaumont-Cherry Valley Recreation and Park District office, and the Beaumont-Cherry Valley Water District, as well as at the library.

15.2 FINANCIAL INFORMATION

The Library District adopts an annual budget. The Library Director is responsible for preparing the annual budget and submitting it to the Board for review. The District’ revenue is largely from property taxes (95 percent) and is supplemented by fees, fines, grants, and donations. A strong real estate market and population growth within the District resulted in a 27.8 percent increase in the District’s property tax revenue between the end of FY 2004 and 2005.

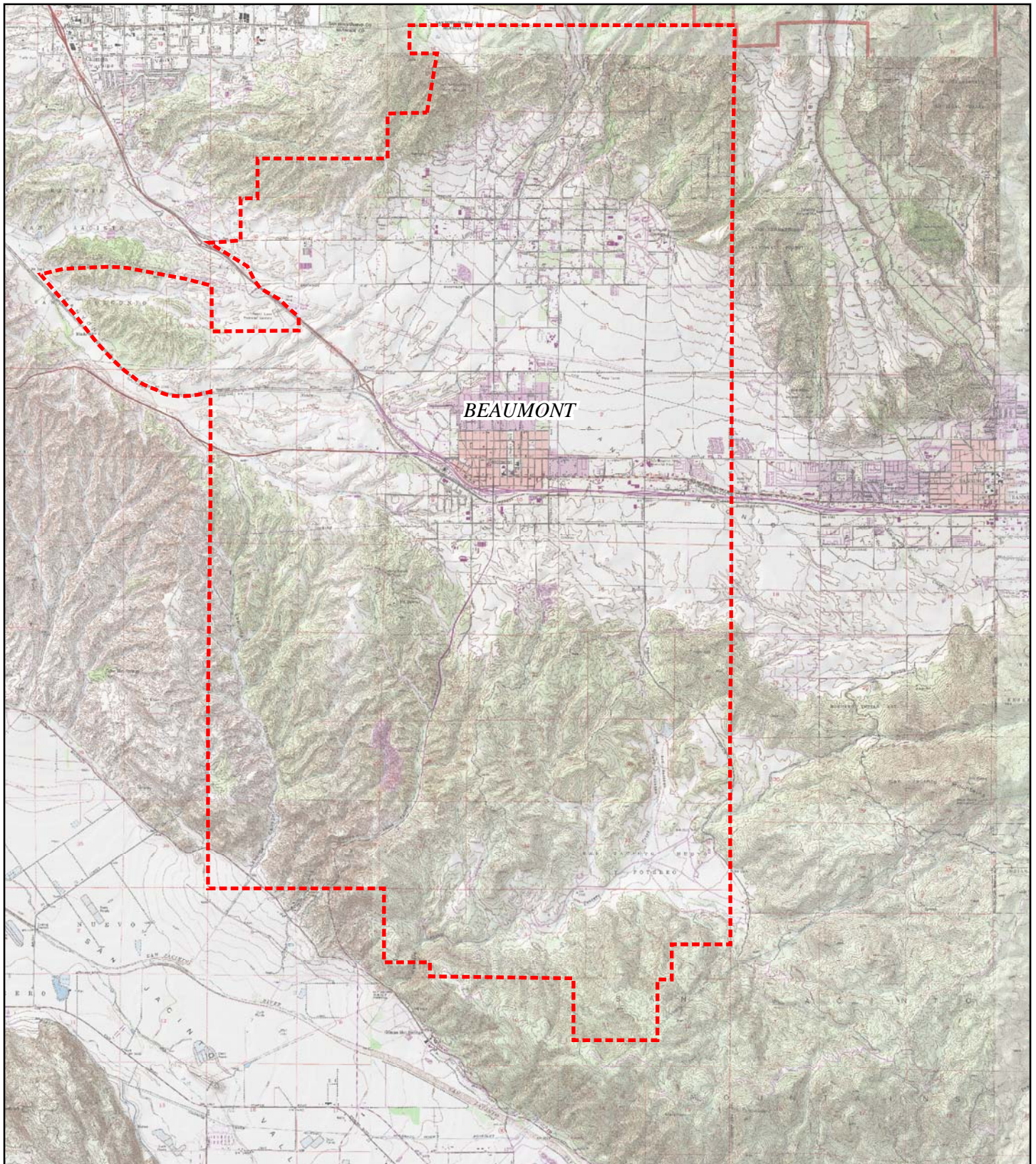
As shown in Table 15.A, the District has had revenues that exceed expenses. Similarly, the budget for FY 2005–06 is expected to result in revenues that exceed expenditures. It should be noted that in addition to the expenditures listed in Table 15.A, the District has budgeted \$200,000 as a contribution to other funds, \$15,000 for contingencies, and \$50,000 for the general reserve, which is the same reserve as the prior year. Based on the District’s population estimate and the expenditures for the fiscal year ending 2005, the District’s cost to provide library services was \$13.16 per capita.

Table 15.A: Beaumont Library District Summary of Total Revenues and Total Expenses

	2004	2005	2006*
Total Expenses	\$493,333	\$580,847	\$700,000
Total Revenues	\$535,281	\$720,738	\$750,000
Net Revenues (Loss)	\$41,948	\$139,891	\$50,000

Source: Financial Statements for the fiscal years ending 2004 and 2005; fiscal year 2005–06 budget.

*Budgeted information



LSA

LEGEND


 Beaumont Library District Boundaries

FIGURE 15.1



Riverside LAFCO MSR
 Beaumont Library District

SOURCE: USGS 7.5" Quads, San Jacinto, Lakeview, El Casco, Beaumont, Ca.

I:\RLA530\G\Beaumont_Library_Dist.ai (9/7/06)

In addition to the required financial budgets and audits, the library is required to prepare an annual State report, which provides operations information including collection data, circulation, and revenue data. Also, monthly operational reports are required to be prepared and submitted to the Board. These reports contain circulation and collection information and monthly expenditure and revenue data.

15.3 LIBRARY SERVICES

The library facility is located at 125 East Eighth Street in Beaumont. The original library was built with a grant of \$10,000 from Andrew Carnegie in 1914. A new addition was built in 1966 and now houses adult collections and services. A multipurpose room was added in 1981, and restrooms were added in 1994 to satisfy requirements of the ADA. The addition that was built in 1966 was renovated with contemporary lighting and upgraded heating and air conditioning in 2002. A project to install an elevator is scheduled for late 2006. The current facility is approximately 12,000 sq. ft. and has 60,425 volumes and 18,538 registered borrowers. The library's annual circulation is approximately 110,250. The library is staffed by 8.5 full-time equivalent personnel.

In February 2006, the District completed a Space Needs Assessment Study and Facilities Plan for the District to provide adequate services for the next 20 years. The study determined that there is rapid growth in population and housing within the District and provided specific data for the City area. Table 15.B provides the recent residential development activity within the City of Beaumont.

Table 15.B: Building Permits and New Homes within Beaumont

	2000	2001	2002	2003	2004
New Homes	100	300	400	1,000	1,100
Permits Finalized	0	200	600	1,500	1,600
Permits Issued	300	600	800	1,900	2,300

Source: Beaumont Library District Facilities Needs Assessment Study, February 2006.

The Assessment Study and Facilities Plan determined that the existing library facility is inadequate for serving the District's population and that a replacement library should be developed no later than 2009. The Study states that the new facility should be 44,880 sq. ft. The projected cost for the new facility is between \$16 and 17.8 million. The Study also includes projected costs for providing an expanded collection and for operation of the new facility.