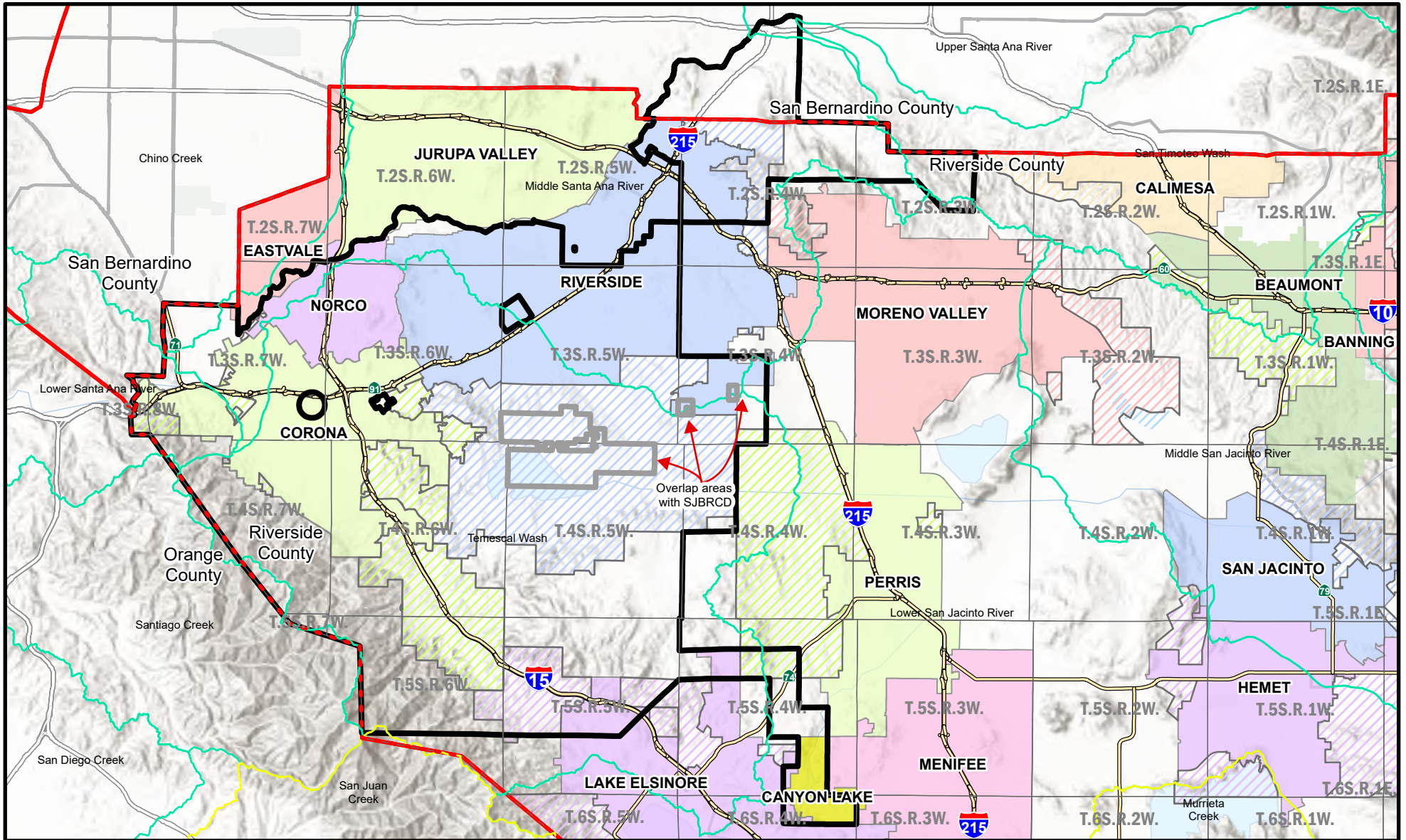
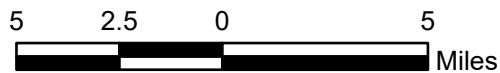


Riverside-Corona Resource Conservation District and Sphere of Influence

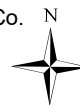


Data Sources: County of Riverside; LAFCO; BOE, USGS



SOI portion in San Bernardino Co.
LAFCO 2918: 2/18/2004.

193,896.8 acres
303.0 square miles



Legend

- Townships
- Riverside-Corona Resource Conservation District**
- Overlap Areas with San Jacinto RCD
- County Boundary
- Santa Ana Watershed
- Laguna Coastal Watershed

Last Recorded Boundary change
or SOI Established: 09/27/1984



Disclaimer: The information shown is intended to be used for reference and general display purposes only and is not to be used as an official map.

Weed abatement &
Irrigation management
services provided by District

SOI Established: 09/27/1984
** SOI is coterminous with District Boundary
Author: Crystal M. Craig & Michael Henderson Map Created on 09/19/2025